



Children with Diabetes[®]

Friends for Life[®]

October 7–9, 2022 • College Park Marriott • Hyattsville, Maryland • #FFLColegePark22

Dream big with Dexcom

There's so much more to your story than diabetes.

Dexcom helps patients and their care teams take control of diabetes management—so they can boldly go wherever their dreams might take them.

Visit us at our booth and dare to dream!

#DreamBigWithDexcom



Dexcom is a registered trademark of Dexcom, Inc. in the United States and/or other countries. ©2022 Dexcom, Inc. All rights reserved. LBL-1001017 REV001

dexcom



Dear CWD Friends,

Welcome to the Friends for Life College Park 2022 conference! Whether you have come from near or far, we know that this weekend's event will leave you with new technology concepts to think about, new ideas for diabetes management, new advocacy routes, and best of all—new friends.

Please take a few minutes to look over the schedule for Friday, Saturday and Sunday. During some time slots for adults, we have scheduled only one speaker. At other times, we will divide the adults into breakout sessions. You may attend any of the adult sessions; no sign-up is necessary. Sessions for adults and parents are in General Vessey 1 and 2 and Salon C.

The children's age groups are in the following rooms:

Teens (ages 13-17): Patuxent

Tweens (ages 9-12): Chasen

Elementary (ages 6-8): Room 1105

Kiddie Kove (ages 0-5): Room 1101–1102

The kids will report to these rooms each session, each day. Childcare (Kiddie Kove) will be provided on Saturday and Sunday for little ones ages 0–5. While we will always check a child's blood glucose if there is a question or if a child doesn't feel well, we ask that you continue to manage your child's diabetes as you would at home.

A great big thank you to the staff and speakers who are joining us this weekend. Some of our staff include CWD young adults who have grown up 'through the ranks' of Friends for Life conferences, and are now here as great role models with optimism to share! Our program leaders and staff include several individuals who have been to every single conference since 2001, working with, teaching, and supporting our kids and families. There's a lot of history and experience among the staff with us in College Park. Please make sure you take the time to meet with and talk with them.

Finally, a big thank you to our sponsors and exhibitors. Holding a Friends for Life conference is expensive and costs significantly more per person than we charge for registration. We are able to hold our conferences because of our generous sponsors. We know that your resources are limited, and we appreciate that you have taken the time away from your own families to be with us this weekend. It is our hope that every single one of you meets every single conference participant! Please feel free to join in our educational sessions. We'll all learn together.

Have a wonderful conference!

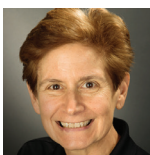
Jeff Hitchcock



Jeff Hitchcock

Founder and President
Children with Diabetes
jeffh@childrenwithdiabetes.com

Laura Billetdeaux

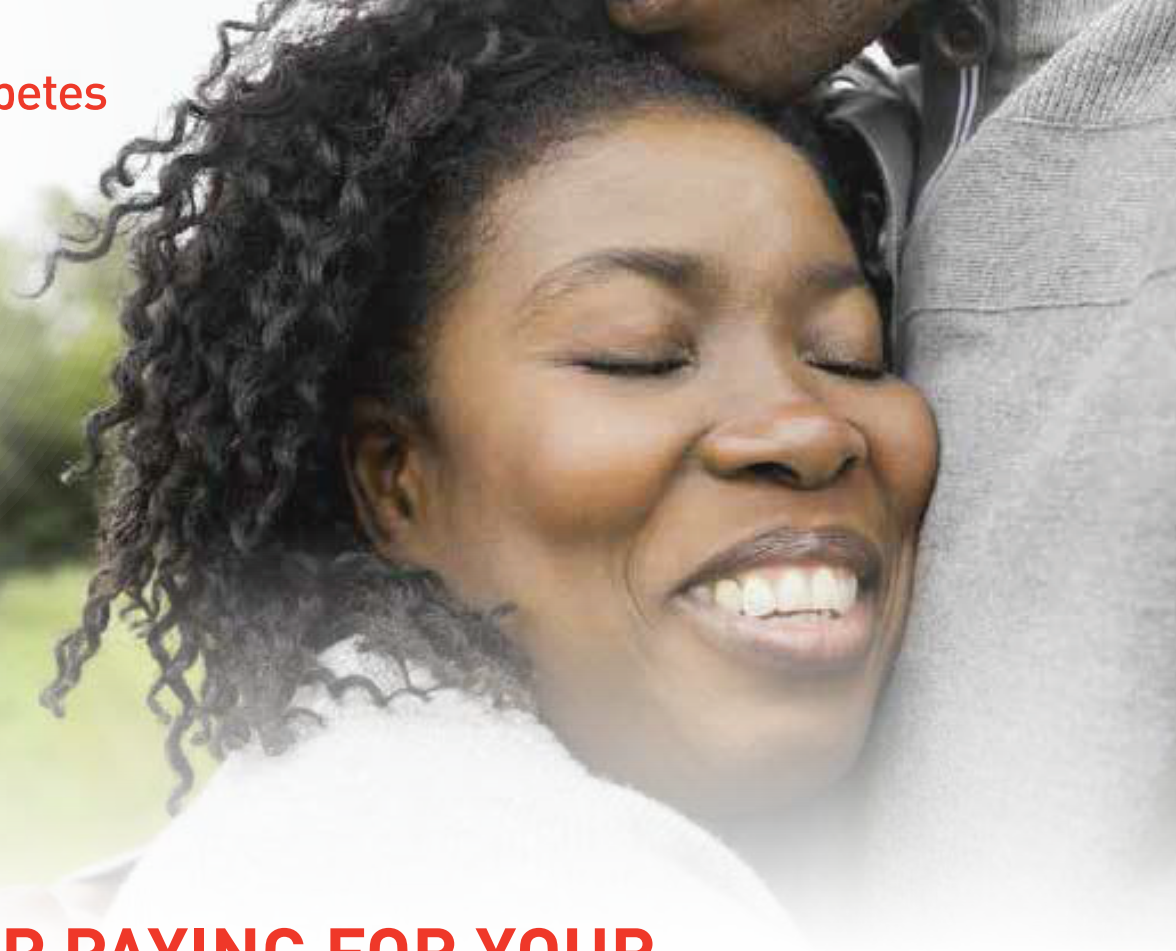


Laura Billetdeaux

Vice President, Education and Programs
Children with Diabetes
laurab@childrenwithdiabetes.com



Lilly Diabetes
Solution
Center



NEED HELP PAYING FOR YOUR INSULIN OR DIABETES CARE?

The Lilly Diabetes Solution Center may help lower out-of-pocket costs for people taking Lilly insulin who:

- are in the deductible phase of their insurance plan
- do not have insurance
- have a prescription for any Lilly insulin

Call 1-833-808-1234

Or visit www.insulinaffordability.com

Help is available at the Lilly Diabetes Solution Center

09/2021 © Lilly USA, LLC 2021. All rights reserved.

Lilly



Dear Friends,

As Chairman of the Board of Children with Diabetes, welcome to Friends for Life College Park 2022.

I first attended Friends for Life over a decade ago, and was literally blown away! I felt then, and I continue to feel today, that Friends for Life is a life-changing experience, not only for individuals living with T1D, but for their parents, families and friends, and for all who have the good fortune—and wisdom—to attend. Being in this “safe” environment, where everyone is aware of our challenges, where everyone is watching out for everyone else, where everyone can enjoy the events and educational and social settings, is both uplifting and liberating. We hope this continues to set the groundwork for expanding this safe and supportive environment into our daily lives, where we learn, work, play, and thrive!

Children with Diabetes has been in existence for over two decades and continues to evolve and thrive as a 501(c)(3) nonprofit. One visible evolution is our branding. For years, we have identified ourselves with a smiling face. You will note that we have not abandoned that smile, but rather have updated its image to better reflect our modern focus. Another evolution is our website, which we redesigned to be increasingly user-friendly, and easier to navigate, in keeping with current social media and technology. What we have kept, and what we carefully nurture, is our long-standing commitment to putting people with diabetes at the center of everything we do.

Rest assured, our Board of Directors provides continuing guidance and assistance to Jeff and Laura to ensure that Children with Diabetes will continue to be a resource to you! Every board member is passionate about diabetes, because each of us has been touched by the diabetes journey, either personally or professionally.

This year has been our most ambitious one yet, with new conference locations, a dynamic website and social media channels, and our big goal of bringing Friends for Life to a broader community. We want to serve more families, and with your support, we’re able to make a real difference for more people living with diabetes. Your donation helps us bring Friends for Life to families across the country. Children with Diabetes and our community thrive as a direct result of your generosity. Because caring for diabetes is better when we do it together.

For each of us here in College Park, I wish a reaffirmation of the life-changing experience of Friends for Life!



Kenneth P. Moritsugu, MD, MPH, FACPM
Former Surgeon General of the United States

Chairman of the Board, Children with Diabetes
ken@childrenwithdiabetes.com





FFL College Park Adult Program

FRIDAY, OCTOBER 7			
6:00 – 9:00	Registration and Reception/Exhibits Open (All attendees) in Salon A and B		
SATURDAY, OCTOBER 8			
General Vessey 1		General Vessey 2	Salon C
8:00 – 9:00	Buffet Breakfast in General Vessey 1 and 2		
9:00 – 10:00	Opening Keynote - Did Congress Help or Hurt People with Diabetes with the Inflation Reduction Act? (and What’s Next?) George Huntley and Stewart Perry		
10:00 – 10:45	Refreshment Break and Exhibits Open in Salon A and B		
10:45 – 12:00	The Americans with Disabilities Act - Your Rights in College + Beyond Leigh Fickling, MEd, MS, JD + Matt Point, MS	Incorporating Exercise into Diabetes Management Chelsea Lugone, FNP-BC, CDCES	
12:00 – 1:00	Lunch in General Vessey 1 and 2		
1:00 – 2:15	Keeping Children Safe at School Crystal Woodward	T1D: Beyond the Basics George Grunberger, MD, FACP, MACE	
2:15 – 3:00	Refreshment Break and Exhibits Open in Salon A and B		
3:00 – 4:15	Parenting your Children with Diabetes Maureen Monaghan, PhD, CDCES	Health Insurance with T1D – How to Select the Plan that’s Right for You George Huntley and Stewart Perry	
6:00 – 8:00	Dinner in General Vessey 1 and 2		
SUNDAY, OCTOBER 9			
General Vessey 1		General Vessey 2	Salon C
8:00 – 9:00	Buffet Breakfast in General Vessey 1 and 2		
9:00 – 10:15	Getting the Most out of your Automated Insulin Delivery Systems Sarah Corathers, MD	Diabetes and Mental Health Maureen Monaghan, PhD, CDCES	Frazzled Friends for Life: Moms Discussion Group Leigh Fickling, MEd, MS, JD
10:15 – 11:00	Refreshment Break and Exhibits Open in Salon A and B		
11:00 – 12:15	Understanding Sensor Data Chelsea Lugone, FNP-BC, CDCES	Stress Management Techniques for PWD and their Families Maureen Monaghan, PhD, CDCES	Fat and Protein Boluses Marissa Town, RN, BSN, CDCES
12:15 – 1:15	Lunch in General Vessey 1 and 2		
1:15 – 2:30	Traveling the World with Diabetes Oren Liebermann	What you Should Know About Time in Range George Grunberger, MD, FACP, MACE	Dads Down to Earth Jeff Karitis, CFP, CEPA and Ray Bendetto, DM, MS, LFACHE
2:30 – 3:15	Refreshment Break in Salon A and B		
3:15 – 4:15	Closing Keynote: My Journey by Kate Hall Conference ends following the Closing Keynote. Enjoy drinks or dinner with your Fiffles.		



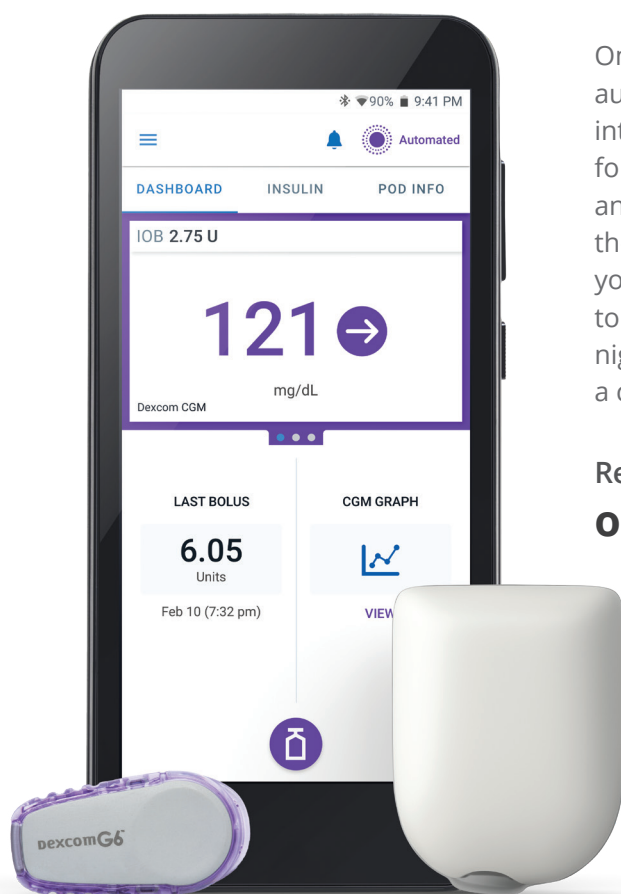
FFL College Park Youth Program

SATURDAY, OCTOBER 8				
	Kiddie Kove Room: 1101-1102	Elementary Room: 1105	Tween Room: Patuxent	Teen Room: Chasen
8:00 – 9:00	Buffet Breakfast in General Vessey 1 and 2			
9:00 – 10:00	Check In and Morning Meeting: Meet New Friends	Icebreakers	Meet the Tweens	Icebreakers
10:00 – 10:45	Refreshment Break and Exhibits Open in Salon A and B			
10:45 – 12:00	Fall Leaf Suncatchers	Orange and Green Team	Tweens Assemble	Harold Time
12:00 – 1:00	Lunch in General Vessey 1 and 2			
1:00 – 2:15	Exercise with Harold	Nutrition: Food Group Fun	Diabetes Jeopardy	Snakes & Ladders
2:15 – 3:00	Refreshment Break and Exhibits Open in Salon A and B			
3:00 – 4:15	Movie and Rest	Harold Time	VIP Scavenger Hunt	Diabetes Jeopardy
6:00 – 8:00	Dinner in General Vessey 1 and 2			

SUNDAY, OCTOBER 9				
	Kiddie Kove Room: 1101-1102	Elementary Room: 1105	Tween Room: Patuxent	Teen Room: Chasen
8:00 – 9:00	Buffet Breakfast in General Vessey 1 and 2			
9:00 – 10:15	Check In and Morning Meeting: Orange Team Visits	Scavenger Hunt	Expressing Yourself with Games	Ask the Expert
10:15 – 11:00	Refreshment Break and Exhibits Open in Salon A and B			
11:00 – 12:15	We're Going on a Leaf Hunt	Games with Friends	Green and Orange Teams	Scavenger Hunt
12:15 – 1:15	Lunch in General Vessey 1 and 2			
1:15 – 2:30	Fun Festive Fall Collages	Movie Time with Friends	Get Moving with Harold	Face of Diabetes
2:30 – 3:15	Refreshment Break in Salon A and B			
3:15 – 4:15	Movie and Rest	Life is a Puzzle	Movie Time	Tech Update/ Orange Team

NOW AVAILABLE

MEET THE Omnipod[®] 5 System



Pod and Dexcom G6 shown without the necessary adhesive.
Dexcom G6 sold separately.

Omnipod 5, the first and only tubeless, automated insulin delivery system to integrate with Dexcom G6, is now available for people with type 1 diabetes ages 2 years and older. SmartAdjust™ technology in the Pod adjusts insulin delivery based on your customized Target Glucose—helping to protect against highs and lows, day and night.^{1,2} Plus, it can all be controlled from a compatible smartphone.†

Ready to go tubeless? Get started at
omnipod.com/CWD

1. Study in 240 people with T1D aged 6 - 70 years involving 2 weeks standard diabetes therapy followed by 3 months Omnipod 5 use in Automated Mode. Average day time (6AM-12AM) in Target Glucose range (from CGM) in adults/adolescents and children for standard therapy vs Omnipod 5 = 64.8% vs. 72.5%; 51.5% vs. 64.6%. Average overnight (12AM-6AM) in Target Glucose range (from CGM) in adults/adolescents and children for standard therapy vs Omnipod 5 = 64.3% vs. 78.1%; 55.3% vs. 78.1%. Brown et al. Diabetes Care (2021).
2. Study in 80 people with T1D aged 2 - 5.9 yrs involving 2 weeks standard diabetes therapy followed by 3 months Omnipod 5 use in Automated Mode. Average time in Target Glucose range (6AM-12AM) from CGM in standard therapy vs. Omnipod 5 = 56.9% vs 63.7%. Average time in Target Glucose range (12AM-6AM) from CGM in standard therapy vs Omnipod 5 = 58.2% vs. 81%. Sherr JL, et al. Diabetes Care (2022).

†For a list of compatible smartphone devices visit omnipod.com/compatibility

The Omnipod 5 Automated Insulin Delivery System is indicated for use by individuals with type 1 diabetes mellitus in persons 2 years of age and older. The Omnipod 5 System is intended for single patient, home use and requires a prescription. The Omnipod 5 System is compatible with the following U-100 insulins: NovoLog®, Humalog®, and Admelog®.

The Omnipod 5 ACE Pump (Pod) is intended for the subcutaneous delivery of insulin, at set and variable rates, for the management of diabetes mellitus in persons requiring insulin. The Omnipod 5 ACE Pump is able to reliably and securely communicate with compatible, digitally connected devices, including automated insulin dosing software, to receive, execute, and confirm commands from these devices. SmartAdjust™ technology is intended for use with compatible integrated continuous glucose monitors (iCGM) and alternate controller enabled (ACE) pumps to automatically increase, decrease, and pause delivery of insulin based on current and predicted glucose values.

The Omnipod 5 SmartBolus Calculator is intended to calculate a suggested bolus dose based on user-entered carbohydrates, most recent sensor glucose value (or blood glucose reading if using fingerstick), rate of change of the sensor glucose (if applicable), insulin on board (IOB), and programmable correction factor, insulin to carbohydrate ratio, and target glucose value.

WARNING: SmartAdjust technology should NOT be used by anyone under the age of 2 years old. SmartAdjust technology should also NOT be used in people who require less than 5 units of insulin per day as the safety of the technology has not been evaluated in this population. The Omnipod 5 System is NOT recommended for people who are unable to monitor glucose as recommended by their healthcare provider, are unable to maintain contact with their healthcare provider, are unable to use the Omnipod 5 System according to instructions, are taking hydroxyurea as it could lead to falsely elevated CGM values and result in over-delivery of insulin that can lead to severe hypoglycemia, and do NOT have adequate hearing and/or vision to allow recognition of all functions of the Omnipod 5 System, including alerts, alarms, and reminders. Device components including the Pod, CGM transmitter, and CGM sensor must be removed before Magnetic Resonance Imaging (MRI), Computed Tomography (CT) scan, or diathermy treatment. In addition, the Controller and smartphone must be placed outside of the procedure room. Exposure to MRI, CT, or diathermy treatment can damage the components. Visit www.omnipod.com/safety for additional important safety information.

WARNING: DO NOT start to use the Omnipod 5 System or change settings without adequate training and guidance from a healthcare provider. Initiating and adjusting settings incorrectly can result in over-delivery or under-delivery of insulin, which could lead to hypoglycemia or hyperglycemia.

©2022 Insulet Corporation. Omnipod, the Omnipod 5 logo and SmartAdjust are trademarks or registered trademarks of Insulet Corporation. All rights reserved. Dexcom and Dexcom G6 are registered trademarks of Dexcom, Inc. in the United States and/or other countries. All other trademarks are the property of their respective owners. The use of third party trademarks does not constitute an endorsement or imply a relationship or other affiliation. INS-OHS-09-2022-00003 v1.0



Jeff Hitchcock

Jeff Hitchcock is the Founder, President, creator, editor, and webmaster of Children with Diabetes. After earning a degree in computational mathematics in 1981, Jeff worked in high tech and traveled the world, meeting Brenda, who would become his wife, in Africa. In September of 1989, their first child was diagnosed with type 1 diabetes at the age of two. Jeff worked in defense-related industries until 1995, when he started a small internet company and launched Children with Diabetes to share his family's experience caring for a child with T1D. He subsequently worked at LEXIS-NEXIS and Pearson plc on Internet initiatives, and now works full time bringing Children with Diabetes to you. Jeff also serves on the Board of Directors for the Diabetes Patient Advocacy Coalition (DPAC) and Beta Bionics.



Laura Billetdeaux, MS

A finicky connoisseur of hotel meeting space, cappuccino, and kid-friendly cheese and fruit platters, **Laura Billetdeaux** is CWD's VP of Education and Programs. Since the first CWD event in June 2000, Laura has organized Friends for Life conferences, always keeping in mind the true purpose of Children with Diabetes—education and support of families with type 1, and always keeping in mind why it all works—the efforts of so many dedicated individuals. Laura lives in Manchester, Michigan with her husband Neal. They are parents of Sam, FFL Meet-Ups Coordinator, and Carolyn, CWD's Volunteer and Training Coordinator.



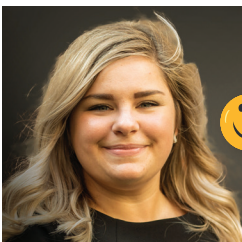
Matthew Point, MS

Matthew (Matt) Point, MS, serves as CWD's Director of Advancement. Matt is responsible for CWD's fundraising and development, working with our generous sponsors, and managing our conference scholarship program. In 2013, Matt attended his first CWD event—Friends for Life Orlando. Matt's favorite part of being involved with CWD and the Friends for Life Conferences is having the opportunity to meet other significant others of people with type 1 diabetes.



Marissa Town, BSN, RN, CDCES

Marissa Town, BSN, RN, CDCES, has lived with type 1 diabetes for 31 years and has been coming to the Children with Diabetes Friends for Life conferences since the beginning in the year 2000. She realized early on that helping other people living with diabetes was what she wanted to devote her life to, so she became a nurse and a diabetes educator. Marissa has worked in a diabetes clinic, as a pump trainer, as a Clinical Research Manager at Stanford University in diabetes research, and has recently started as the Clinical Director for CWD. Her main goal is to help improve peoples' quality of life and reduce barriers to quality healthcare. Marissa and her partner Adam have two young children, Connor and Everly, who also enjoy coming to Friends for Life to share their experiences growing up with a mom with type 1 diabetes. Marissa loves game nights, hiking with her dog Baxter, traveling (when it's not a pandemic), and crafting with her kids.



Sasha Squibb

Sasha Squibb is a visual communication specialist with a focus in non-profit marketing, serving as CWD's Creative Director. Sasha was diagnosed with type 1 diabetes more than 25 years ago and in a previous role oversaw outreach and marketing initiatives for the T1D community across Southwest Ohio. She is highly passionate about providing education and support for people with T1D and their families.



Beth Levering

Beth Levering is a part-time Project Manager and Administrative Assistant for Children with Diabetes. Beth was diagnosed with type 1 at the age of 21, shortly after graduating from the University of Cincinnati with a Communication degree. She is married and lives in the Cincinnati area and mom to three - two boys and a girl. Beth co-created a support group in the Northern Cincinnati area called "Sisterhood of the Defunct Pancreases" for adult T1 women. She enjoys spending time with her family, reading, spending time outdoors, and traveling to new places.





The Conference Faculty



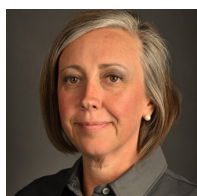
Ray Benedetto, **DM, MS, LFACHE**

Sunday	1:15 - 2:30	Salon C	Dads Down to Earth
--------	-------------	---------	--------------------



Sarah Corathers, **MD**

Sunday	9:00 - 10:15	General Vessey 1	Getting the Most out of your Automated Insulin Delivery System
--------	--------------	------------------	--



Leigh Fickling, **MEd, MS, JD**

Saturday	10:45 - 12:00	General Vessey 1	The Americans with Disabilities Act - Your Rights in College + Beyond
----------	---------------	------------------	---

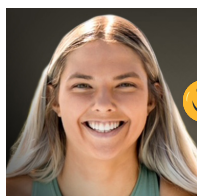
Sunday	9:00 - 10:15	Salon C	Frazzled Friends for Life: Mom's Discussion Group
--------	--------------	---------	---



George Grunberger, **MD, FACP, MACE**

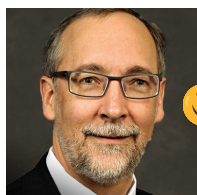
Saturday	1:00 - 2:15	General Vessey 2	T1D Beyond the Basics
----------	-------------	------------------	-----------------------

Sunday	1:15 - 2:30	General Vessey 2	What You Should Know About Time in Range
--------	-------------	------------------	--



Kate Hall

Sunday	3:15 - 4:15	General Vessey 1 and 2	Closing Keynote
--------	-------------	------------------------	-----------------



George Huntley

Saturday	9:00 - 10:00	General Vessey 1 and 2	Opening Keynote
----------	--------------	------------------------	-----------------

Saturday	3:00 - 4:15	General Vessey 2	Health Insurance with T1D...
----------	-------------	------------------	------------------------------



Jeffrey Karitis

Sunday	1:15 - 2:30	Salon C	Dads Down to Earth
--------	-------------	---------	--------------------





Oren Liebermann

Sunday	1:15 - 2:30	General Vessey 1	Traveling the World with Diabetes
--------	-------------	------------------	-----------------------------------



Chelsea Lugone, FNP-BC, CDCES

Saturday	10:45 - 12:00	General Vessey 2	Incorporating Exercise into Diabetes Management
----------	---------------	------------------	---

Sunday	11:00 - 12:15	General Vessey 1	Understanding Sensor Data
--------	---------------	------------------	---------------------------



Maureen Monaghan, PhD, CDCES

Saturday	3:00 - 4:15	General Vessey 1	Parenting Your Child with Diabetes
----------	-------------	------------------	------------------------------------

Sunday	9:00 - 10:15	General Vessey 2	Diabetes and Mental Health
--------	--------------	------------------	----------------------------

Sunday	11:00 - 12:15	General Vessey 2	Stress Management Techniques for PWD and Their Families
--------	---------------	------------------	---



R. Stewart Perry

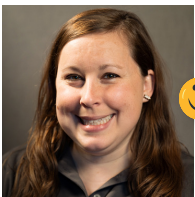
Saturday	9:00 - 10:00	General Vessey 1 and 2	Opening Keynote
----------	--------------	------------------------	-----------------

Saturday	3:00 - 4:15	General Vessey 2	Health Insurance with T1D...
----------	-------------	------------------	------------------------------



Matthew Point, MS

Saturday	10:45 - 12:00	General Vessey 1	The Americans with Disabilities Act - Your Rights in College + Beyond
----------	---------------	------------------	---



Marissa Town, BSN, RN, CDCES

Sunday	11:00 - 12:15	Salon C	Fat and Protein Boluses
--------	---------------	---------	-------------------------



Crystal Crismond Woodward

Saturday	1:00 - 2:15	General Vessey 1	Keeping Children Safe at School
----------	-------------	------------------	---------------------------------



Learn more about our Faculty by scanning the QR Code.



Denotes faculty member with diabetes



Founding Sponsor



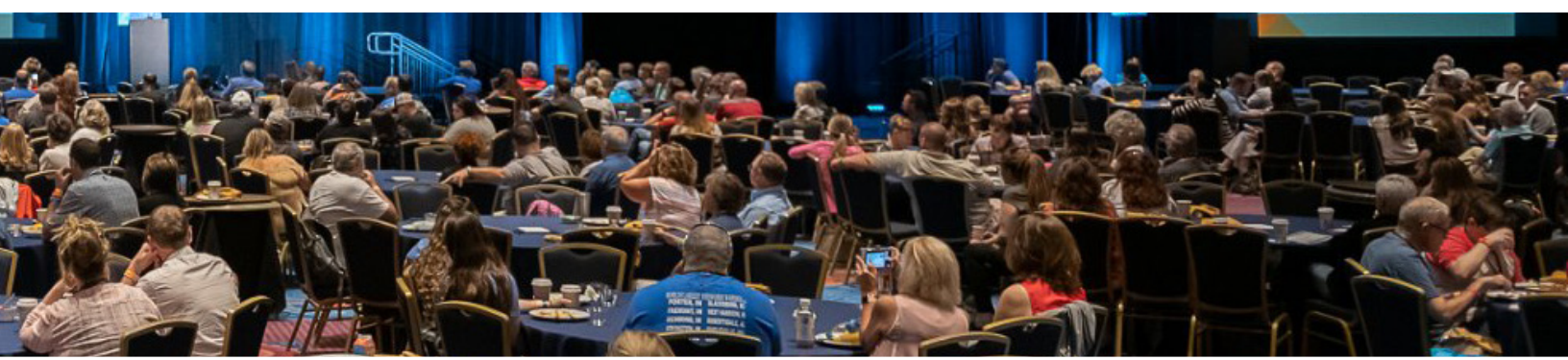
Dexcom

CONTINUOUS GLUCOSE MONITORING

Dexcom, Inc., headquartered in San Diego, CA, is dedicated to developing innovative glucose sensing technology and products to help patients and healthcare providers better manage diabetes. The Dexcom G6™ Continuous Glucose Monitoring (CGM) System does not require fingersticks for calibration or diabetes treatment decisions* and features simple, one-touch sensor insertion. The System provides exceptional accuracy with an overall MARD of 9.0%† and features an Urgent Low Soon alert that can warn users 20 minutes in advance of severe hypoglycemia (55 mg/dL). Dexcom is the only provider of CGM systems indicated for children ages 2 years and older. Please visit www.dexcom.com.

*If your glucose alerts and readings from the G6 do not match symptoms or expectations, use a blood glucose meter to make diabetes treatment decisions.

†MARD is a statistical measure of accuracy; the lower the number, the better.



Lilly

Lilly has been a global leader in diabetes care since 1923, when we introduced the world's first commercial insulin. Today we are building upon this heritage by working to meet the diverse needs of people with diabetes and those who care for them. Through research, collaboration and quality manufacturing we strive to make life better for people affected by diabetes and related conditions. We work to deliver breakthrough outcomes through innovative solutions—from medicines and technologies to support programs and more.





Supporting Sponsors



Insulet Corporation (NASDAQ: PODD), headquartered in Massachusetts, is an innovative medical device company dedicated to making the lives of people with diabetes and other conditions easier through the use of its Omnipod® product platform. The Omnipod® Insulin Management System provides a unique alternative to traditional insulin delivery methods. With its simple, wearable design, the disposable Pod provides up to three days of non-stop insulin delivery, without the need to see or handle a needle. Insulet also leverages the unique design of its Pod, by tailoring its Omnipod® technology platform for the delivery of non-insulin subcutaneous drugs across multiple therapeutic areas. Founded in 2000, more than 140,000 users across the globe rely on Insulet's Omnipod® Insulin Management System to bring simplicity and freedom to their lives. For more information, visit www.myomnipod.com.



Tandem Diabetes Care, Inc. is a medical device company dedicated to improving the lives of people with diabetes through relentless innovation and revolutionary customer experience. The Company takes an innovative, user-centric approach to the design, development and commercialization of products for people with diabetes who use insulin. Tandem manufactures and sells the t:slim X2 insulin pump with Control-IQ technology. The t:slim X2 pump is capable of remote feature updates using a personal computer. Tandem is based in San Diego, California.

RX ONLY. The t:slim X2 insulin pump, Basal-IQ technology, and Control-IQ technology are intended for single patient use. The t:slim X2 pump, Basal-IQ technology, and Control-IQ technology are indicated for use with NovoLog or Humalog U-100 insulin.

Live the Moments That Count

t:slim X2 Insulin Pump WITH Control-IQ TECHNOLOGY

Audrina
diagnosed
2016

- ✓ Adjusts basal insulin delivery to help prevent highs and lows
- ✓ Delivers automatic correction boluses (up to one per hour)*
- ✓ Dedicated Exercise Activity and Sleep Activity for more targeted control

tandemdiabetes.com/kids



Control-IQ technology does not prevent all highs and lows. You must still bolus for meals and actively manage your diabetes. Visit tandemdiabetes.com/tslimX2-use for more information.

* If glucose values are predicted to be above 180 mg/dL, Control-IQ technology calculates a correction bolus using the Personal Profile settings and a target of 110 mg/dL and delivers 60% of that value. An Automatic Correction Bolus will not occur within 60 minutes of a bolus that has been delivered or cancelled.

Important Safety Information: RX ONLY. The t:slim X2 pump and Control-IQ technology are intended for single patient use. The t:slim X2 pump and Control-IQ technology are indicated for use with NovoLog or Humalog U-100 insulin. **t:slim X2 insulin pump:** The t:slim X2 insulin pump with interoperable technology is an alternate controller enabled (ACE) pump that is intended for the subcutaneous delivery of insulin, at set and variable rates, for the management of diabetes mellitus in people requiring insulin. The pump is able to reliably and securely communicate with compatible, digitally connected devices, including automated insulin dosing software, to receive, execute, and confirm commands from these devices. The t:slim X2 pump is indicated for use in individuals six years of age and greater. **Control-IQ technology:** Control-IQ technology is intended for use with a compatible integrated continuous glucose monitor (iCGM, sold separately) and ACE pump to automatically increase, decrease, and suspend delivery of basal insulin based on iCGM readings and predicted glucose values. It can also deliver correction boluses when the glucose value is predicted to exceed a predefined threshold. Control-IQ technology is intended for the management of Type 1 diabetes mellitus in persons six years of age and greater.

WARNING: Control-IQ technology should not be used by anyone under the age of six years old. It should also not be used in patients who require less than 10 units of insulin per day or who weigh less than 55 pounds.

Control-IQ technology is not indicated for use in pregnant women, people on dialysis, or critically ill patients. Do not use Control-IQ technology if using hydroxyurea. Users of the t:slim X2 pump and Control-IQ technology must: use the insulin pump, CGM, and all other system components in accordance with their respective instructions for use; test blood glucose levels as recommended by their healthcare provider; demonstrate adequate carb-counting skills; maintain sufficient diabetes self-care skills; see healthcare provider(s) regularly; and have adequate vision and/or hearing to recognize all functions of the pump, including alerts, alarms, and reminders. The t:slim X2 pump, and the CGM transmitter and sensor must be removed before MRI, CT, or diathermy treatment. Visit tandemdiabetes.com/safetyinfo for additional important safety information.

© 2022 Tandem Diabetes Care, Inc. All rights reserved. Tandem Diabetes Care, Control-IQ, t:simulator, and t:slim X2 are either registered trademarks or trademarks of Tandem Diabetes Care, Inc. in the United States and/or other countries. Dexcom and Dexcom G6 are either registered trademarks or trademarks of Dexcom, Inc. in the United States and/or other countries. Apple and the Apple logo are trademarks of Apple Inc., registered in the U.S. and other countries. App Store is a service mark of Apple Inc. Google Play and the Google Play logo are trademarks of Google LLC. All third-party marks are the property of their respective owners. ML-1010431_A



TANDEM
Diabetes Care

(877) 801-6901
tandemdiabetes.com

Download t:simulator App
A virtual pump demo on your smartphone





Friends of CWD



Beta Bionics is a public benefit corporation and certified B corp. committed to commercializing the iLet® bionic pancreas. We're a people-focused company, here to serve the wider diabetes community. We want to make a difference and aim to improve the lives of people living with diabetes and hope to reduce the data and decision-making overload that PWD and their caregivers often deal with. To learn more about Beta Bionics, our team and our mission visit us at www.betabionics.com and @BetaBionics on social media.

Medtronic

Medtronic is working together with the global community to change the way people manage diabetes. The company aims to transform diabetes care by expanding access, integrating care, and improving outcomes, so people living with diabetes can enjoy greater freedom and better health.



Provention Bio, Inc. (Nasdaq: PRVB) is a biopharmaceutical company focused on advancing the development of investigational therapies that may intercept and prevent debilitating and life-threatening immune-mediated disease. The Company's pipeline includes a late-stage product candidate for type 1 diabetes (T1D) as well as clinical drug candidates in other autoimmune diseases, including celiac disease and lupus. We are proud to be part of the T1D ecosystem and are committed to bringing awareness to the importance and urgency of screening people with a family history of T1D for early-stage disease. Visit ProventionBio.com for more information or follow us on Twitter: @ProventionBio.

Medtronic

MiniMed™ 770G system

Helps protect from lows even as you sleep



Take the
next step

Refers to SmartGuard Auto Mode. Some user interaction required. Individual results may vary. The MiniMed 770G system is for type 1 ages 2 and over. Prescription required. Individual results may vary. **WARNING: Do not use SmartGuard Auto Mode for people who require less than 8 units or more than 250 units of insulin/day.** For details, please visit <http://bit.ly/770gRisks>.

US-IPT-2200326 © 2022 Medtronic. All rights reserved. Medtronic, Medtronic logo and Engineering the extraordinary are trademarks of Medtronic. All other brands are trademarks of a Medtronic company.



Friends for Life[®] Orlando 2023



July 4–9, 2023 • Disney's Coronado Springs Resort • Orlando, FL



For more information
and to register and book
your hotel, visit:

FFL.is/Orlando



FFL ORLANDO REGISTRATION LAUNCHES THIS DECEMBER

Register Today for **Friends for Life Orlando**

Looking to connect in an atmosphere where people really understand you - come to Friends for Life, it'll be out of this world!

Join our dedicated group of world-renowned faculty, adults, children, and families with diabetes—including siblings and children of adults with type 1 diabetes—for a great weekend of education and support. Attend educational sessions with cutting-edge diabetes management ideas. Participate in discussion groups, share your story, and help motivate and support others who walk in similar shoes. Watch kids and teens, college students and professionals, young parents and grandparents, new and practiced diabetes clinicians, all make new and lifelong friendships.

When: July 4–9, 2023

Where: *Disney's Coronado Springs Resort*

Registration is \$250 per person for ages 6 and older, \$75 per person for ages 0-5.

Registration includes:

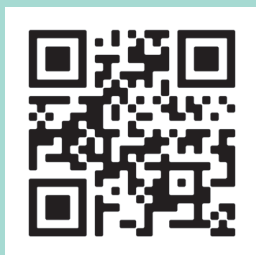
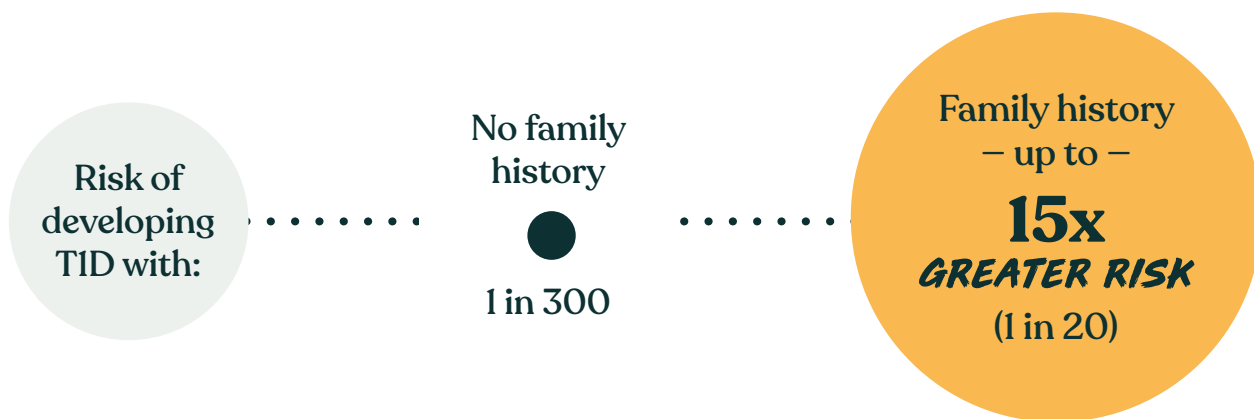
- All sessions and session materials for adults and children
- Kiddie Kove for children ages 0-5
- Wednesday Grand Opening of the Exhibition Hall (light snacks and dessert)
- Thursday breakfast, lunch, and snack breaks
- Thursday Family and Friends Banquet (dinner)
- Friday lunch and snack breaks
- Friday Park Day for Teens
- Saturday social events
- Sunday Farewell Breakfast
- All of the various social events
- One t-shirt per registered person

Scholarships are available! CWD offers a limited number of scholarships to a limited number of applicants. Full scholarships can cover the cost of registration for up to four people and your hotel room for five days. Scholarship applications will be available this winter at FFL.is/scholarships.



HOW DO YOU
protect against an
invisible threat?
Get Type 1 Tested.

If type 1 diabetes (T1D) is in your family, you or your loved ones could be at risk:



Type1Tested.com

SIGN UP

for **Together Through T1** to get helpful information and resources about the importance of T1D screening.

Follow us on social @Type1Tested





Empowering Families Enriching Lives

Better Together Society

The Better Together Society (BTS) is CWD's monthly giving program. Through the BTS, your generosity funds scholarships and activities for the Friends for Life Conferences. Joining is easy! By setting up a recurring monthly donation of at least \$10, you automatically become part of this big-hearted, charitable group. BTS members are recognized in CWD's conference and annual publications. You can become a member of the Better Together Society today and join the ranks of the members listed below by registering at **CWD.is/BTS**.



Better Together Society Members

The Abel Family
Mary Babin
Joan K. Bardsley
Morgan Bednarczyk
Carolyn Billetdeaux
Laura Billetdeaux
Sam Billetdeaux
Teresa Brandt
Kari Brooke
Kathy Brown
Jessica Carey
Leslie Collins
Kristen Conklin

Robert and Donna Cope
Jessica Costley
Carrie Cowan
The Deitle Norris Family
Rebecca DeLong
Jimmy and Liz Dodson
Lisa Dreasher
Susan Feldt
Leigh Fickling
Mark Fox
John Gallagher
Tina Ghosn
Elizabeth Goldstein

Parker Grand
Shelly Grand
Brian Grant
Matthew Point
Tina Hammer
Trey Hawkins
Zoe Heineman
Jeff and Brenda Hitchcock
Kara Hunsche
Jane Hunsche
George Huntley
Rebecca Jervey
Kimberly Kirby

Hannah Klippel
Rachel Knight
Dana Koenig
Corey and Lizzie Lackey
Lauren Lanning
Pam and Benny Loebner
Kristianne Lore-Keyser
Bonnie Martin
Ashlyn Mills
Tim Mills
Heather Mitchell
Kenneth Mortisugu, MD
Tiffany Mosby

Megan and Brian Mulherin
The O'Dell Family
Hannah Opdenaker
Stewart Perry
Ernie Prado
Rachel Price
Ed Raskin
Kenneth Rodenheiser
Deborah Ruppert
Lauren Salko
Carla Scott
Melissa Schwaber
Cherise Shockley

Jenny Sloan
Wendy Smits
Sasha and Jordan Squibb
Kate Stricklin
Jo Stroud
Sara Tolliday
Natalie Toomey
The Town Family
Melissa Waits
Austin White
Robyn Wright

CWD Fiffle Circle

The Fiffle Circle is CWD's individual giving program which recognizes cumulative giving and major gifts. Fiffle Circle members are recognized with a lapel pin upon entering the circle at the \$10,000 level. The Fiffle Circle recognizes at each giving level (listed to the right) with a CWD challenge coin made of solid bronze, silver, and gold. Members of the Fiffle Circle are also recognized each year in CWD's annual report and conference programs.

CWD Fiffle Circle Members

Chairman's Circle

Anonymous Family +
Insulet Leadership Team +

President's Circle

Anonymous Family +
Helen Finegold and Will Nowak +
George and Judy Huntley +
Kevin and Mimi Sayer +

Partner's Circle

Anonymous Family +
Stewart Perry +
The Stoddard Salko Family +

Fiffle Circle

The Abel Family
Anonymous
The Deitle Norris Family +
Gigliola and Edward Hawthorne +
Al and Sue Johnson
The Karitis Family
Teresa and Troy Littlefield
The Lukhard Family
The Merwin Family
The Moritsugu Family

+ denotes a major gift donation in 2021 or earlier

Fiffle Circle Levels of Giving

\$150,000

CHAIRMAN'S CIRCLE

Gold Clad Solid Silver CWD Challenge Coin

\$75,000

PRESIDENT'S CIRCLE

Silver CWD Challenge Coin

\$25,000

PARTNER'S CIRCLE

Bronze CWD Challenge Coin

\$10,000

FIFFLE CIRCLE

Fiffle Circle Lapel Pin and CWD Challenge Coin



Other Ways to HELP US GROW



Legacy Society

The Legacy Society is CWD's planned giving program. By including CWD as a beneficiary of your life insurance program, 401k, or in your will, you will be "seeding the success of the next generation" of families living with diabetes. Your participation in the Legacy Society will allow CWD to continue to provide care our families need. Members of the Legacy Society are recognized with a special lapel pin. Information on joining can be found at cwd.is/fundraising.



Make an Individual Gift

CWD is led by science and empowered by your support. Help us bring our mission of education and inspiration to life with a gift today at cwd.is/donate.



Donate Stock or Mutual Funds

CWD accepts donations of stocks, mutual funds, and gifts from investment accounts. Did you know that donating stock may allow you to avoid capital gains taxes on these assets? However, you should always speak with your financial advisor.

DTC Number: 0075; Account Number: 4586-4785; Account Name: T-1 Today, Inc.



Matching Gifts

Matching gifts can essentially double your donation to CWD—don't forget to file your paperwork with your employer! These programs are generally managed by your company's human resources team. Need verification of your gift to CWD for HR? Email donations@childrenwithdiabetes.com.



Social Media for Social Good

Instagramming your advocacy? Facebook posts for birthday fundraisers? We're using social media to make a difference in the community. Check out the CWD Facebook page for more details at facebook.com/cwdiabetes.

@CWDiabetes @CWDiabetes fb.com/cwdiabetes linkedin.com/company/children-with-diabetes



Thank you Beta Bionics
FOR SUPPORTING



Friends for Life® College Park 2022

October 7-9, 2022 • College Park Marriott • Hyattsville, Maryland





Upcoming FFL Conferences

Mark your calendars for these upcoming Friends for Life events!

2023

Friends for Life Seattle 2023 at the Renaissance Seattle

Seattle, Washington | March 17–19, 2023

Friends for Life Orlando 2023 at Disney's Coronado Springs Resort

Lake Buena Vista, Florida | July 4–9, 2023

Friends for Life White Plains 2023 at the Sonesta White Plains

White Plains, New York | October 6–8, 2023

2024

Friends for Life Falls Church 2024 at the Falls Church Marriott

Falls Church, Virginia | April 5–7, 2024

Friends for Life Orlando 2024 at Disney's Coronado Springs Resort

Lake Buena Vista, Florida | July 9–14, 2024

Friends for Life Anaheim at the Disneyland Hotel

Anaheim, California | October 25–27, 2024

2025

Friends for Life Arlington 2025 at the Renaissance Arlington Capital View Hotel

Arlington, Virginia | March 7–9, 2025

Friends for Life Orlando 2024 at Disney's Coronado Springs Resort

Lake Buena Vista, Florida | July 8–13, 2025

Friends for Life Seattle 2025 at the Renaissance Seattle Hotel

Seattle, Washington | November 7–9, 2025

Future Dates for Friends for Life Orlando

Friends for Life Orlando 2026 at Disney's Coronado Springs Resort

Lake Buena Vista, Florida | July 7–12, 2026

Friends for Life Orlando 2027 at Disney's Coronado Springs Resort

Lake Buena Vista, Florida | July 6–11, 2027

Friends for Life Orlando 2028 at the Gaylord Palms

Kissimmee, Florida | July 4–9, 2028

Friends for Life Orlando 2029 at the Gaylord Palms

Kissimmee, Florida | July 3–8, 2029

Friends for Life Orlando 2030 at the Gaylord Palms

Kissimmee, Florida | July 2–7, 2030



"CWD's reach is far
and their difference
is unmeasurable.
I am so thankful my
daughter can have
these experiences
from the very
beginning of her type
1 diabetes journey.
Her life will undoubtedly
be better for it."

—Missy

T1D and Mom of T1D

Thank You

Thank you to our generous sponsors for making Friends for Life® College Park 2022 possible.

FOUNDING SPONSOR

dexcom
CONTINUOUS GLUCOSE MONITORING

ADVOCACY SPONSOR

Lilly

SUPPORTING SPONSORS

omnipod
simplify life™

TANDEM
Diabetes Care

FRIEND OF CWD

Medtronic

**Beta
Bionics™**

proventionbio